



Ray Smith
General Manager
Bland Shire Council
PO Box 21
WEST WYALONG NSW 2671

Jeff Stien
Senior Economic Development & Tourism Advisor
Bland Shire Council
PO Box 21
WEST WYALONG NSW 2671

7 July 2015

Alex O'Mara
The Executive Director
Resources & Industry Policy
NSW Department of Planning & Environment
GPO Box 39 Sydney NSW 2001

Dear Mr O'Mara

Bland Shire Council (BSC) welcomes the opportunity to provide comments on the Integrated Mining Policy (IMP) as the mining industry makes a significant contribution to the economic prosperity of NSW, particularly in regional areas. BSC supports the following IMP aims and objectives:

- The IMP aims to reduce duplication and improve the efficiency of assessment and regulation of State significant mining developments.
- The policies and guidelines developed as part of the IMP will improve transparency, consistency and accountability for assessment decisions.
- Document and clarify Government requirements for the mining assessment process.
- Improve coordination and cooperation between government agencies so that matters can be considered at the same time.
- Reduce duplication between the three key mining approvals (development approvals, mining leases and environment protection licences).
- For the community, the IMP will provide clearer and more consistent rules governing the assessment and regulation of mining.
- For industry, it will reduce duplication and unnecessary red tape by clarifying regulatory obligations and approval requirements.

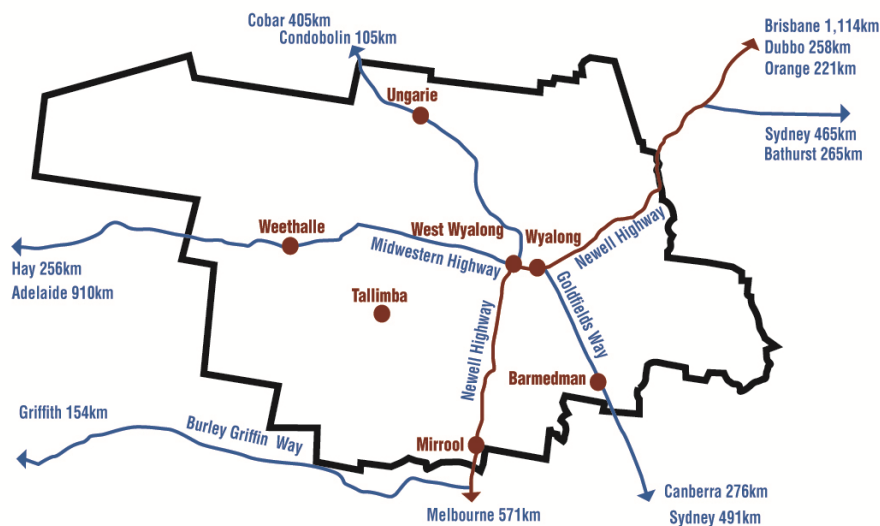
Bland Shire Council would like to see the appropriate balance of economic, environmental and community factors taken into account during the assessment process.

Background

The Bland Shire was proclaimed on 6 March 1906. The Bland Shire, West Wyalong is centrally located in regional New South Wales and has a population of 5,865 and covers an area of 8,558 square kilometres. Towns and villages in the Bland Shire include West Wyalong, Wyalong, Barmedman, Mirrool, Naradhan, Tallimba, Kikiora, Ungarie and Weethalle.



The Bland Shire and West Wyalong central location



The Bland Shire

The Bland Shire is surrounded by the Shires of Lachlan, Forbes, Weddin, Young, Temora, Coolamon, Narrandera and Carrathool.

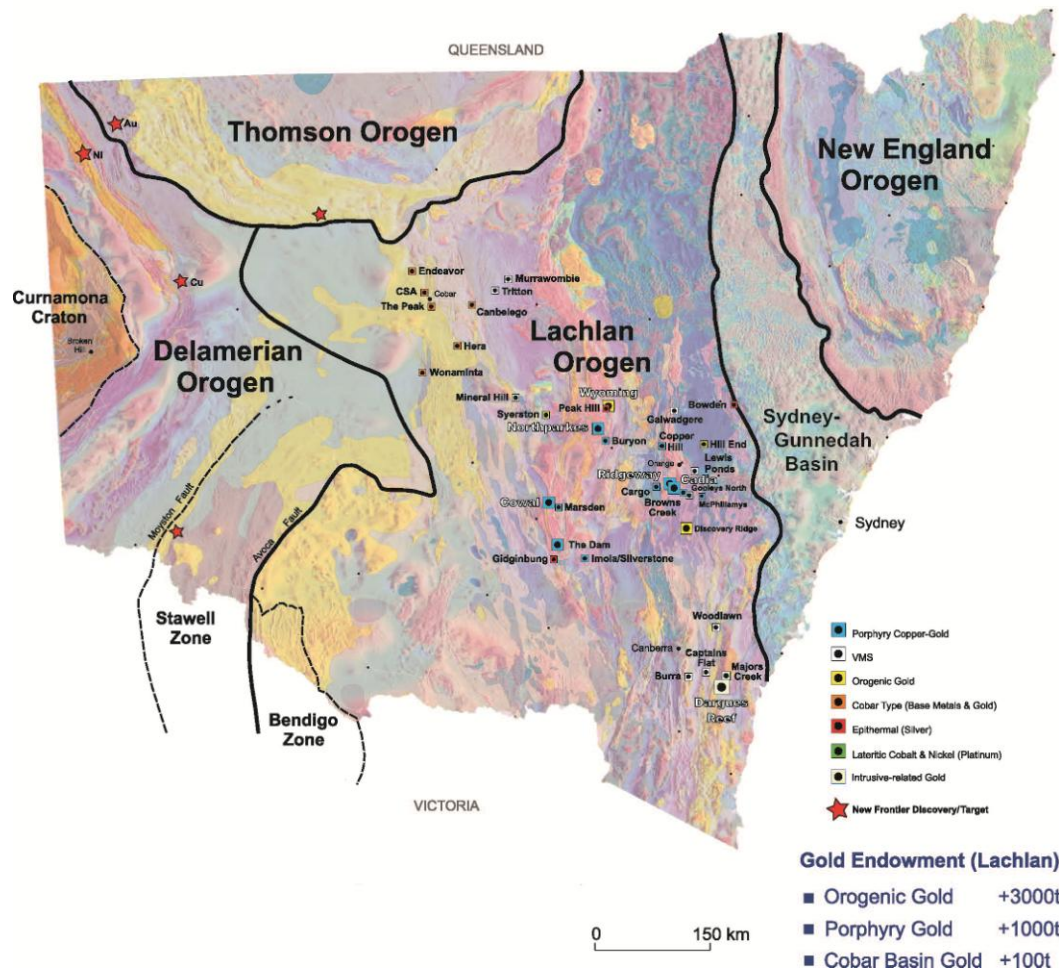
The Bland Shire's history is deeply engrained in agriculture, mining and gold production which continues through to today. The Barrick Cowal Gold Mine commenced construction in 2004 with gold production in 2006 and in 2014, Barrick Cowal produced 268,000 ounces of gold.

The Bland Shire is one of New South Wales largest cereal-growing areas producing wheat, barley, oats, triticale, cereal rye, chickpeas, field peas, lupins, canola and sorghum.

Eucalyptus oil production started in 1907 and the West Wyalong area has become one of the major world exporters of Eucalyptus oil in Australia.

Mining in the Bland Shire

The Bland Shire is located in the Lachlan Orogen. The Lachlan Orogen is a broad orogenic belt that records Cambrian to the Carboniferous convergence between the Australian craton and the proto-Pacific Ocean. It is not a collisional orogenic belt. The Macquarie Arc hosts world class porphyry Cu-Au deposits in the Cadia valley and Northparkes districts. Smaller deposits occur at Cargo and Copper Hill. Structurally controlled Au-Cu occurs at Cowal.



Gold was discovered in the Bland Shire in 1893 and by the end of 1894 there were 300 mining claims registered. Gold mining continued until the 1920's and in 2004 the Canadian Barrick Gold Corporation started to build the Barrick Cowl Gold mine, with production commencing in 2006 and in 2014 produced 268,000 ounces of gold. In 2015 the Barrick Gold Corporation sold the Barrick Cowal Gold mine to Evolution Mining.

In 2015 the following mineral exploration titles and applications were current in the Bland Shire:

- About 20km ENE of West Wyalong – Sandfire Resources NL
- About 29 km NE of West Wyalong - Barrick (Cowal) Limited
- About 33 km ENE of West Wyalong – Newcrest Operations Limited
- About 43 km ESE of West Wyalong – Templar Resources Pty Ltd
- About 35 km W of West Wyalong – Walsh, Denis Michael
- About 10 km SE of West Wyalong – Golden Cross Operations Pty Ltd
- About 25 km ENE of West Wyalong – Gold Fields Australasia Pty Ltd

- About 40 km ENE of West Wyalong – Newcrest Operations Limited
- About 28 km SE of West Wyalong – Rimfire Australia Pty Ltd
- About 11 km N of West Wyalong – Coolan Yard Pty Limited
- About 40 km W of West Wyalong - Hughes, Christopher John
- About 34 km NE of West Wyalong – Barrick (Cowal) Limited
- About 54 km W of West Wyalong – Elliot, John Douglas
- About 42 km E of West Wyalong – Sandfire Resources NL
- About 11 km E of West Wyalong – Golden Cross Operation Pty Ltd
- About 36 km ESE of West Wyalong – Sandfire Resources NL
- About 21 km E of West Wyalong – St Barbara Limited
- About 40 km WNW of West Wyalong – Hughes, Christopher John
- About 7 km ESE of West Wyalong – Sandfire Resources NL
- About 41 km NE of West Wyalong – Clancy Exploration Limited
- About 44 km ENE of West Wyalong – Sandfire Resources NL

Source: <http://www.resourcesandenergy.nsw.gov.au/miners-and-explorers/applications-and-approvals/current-titles-reports,-applications-and-services/title-status-reports>

Alluvial tin was also worked in the Bland Shire from 1960-1970's.

Resources for Regions

The mining industry makes a significant contribution to the economic prosperity of NSW, particularly in regional areas. Mining activity can place additional stress on local infrastructure, particularly roads, bridges and community related infrastructure. In 2011, the NSW Government commenced the Resources for Regions policy, the first stage of which was to conduct an Economic Assessment of Mining Affected Communities. The 2011 assessment led to allocations of \$10 million to local infrastructure projects in the Muswellbrook and Singleton Local Government Areas (LGAs) in the NSW Government's 2012-13 Budget.

The 2011 Economic Assessment of Mining Affected Communities assessment table on page five indicated that the Bland Shire was in Tier 2 and the 2012-13 Economic Assessment of Mining Affected Communities assessment table on page six had the Bland Shire slipping to Tier 3.

With the amount of mining activity that has, is and may occur in the Bland Shire, the Bland Shire Council would like to see the Resources for Regions policy continued and enhanced and to include the Bland Shire.

ATTACHMENT 2**LIST OF LGAs BY CATEGORISATION**

LGAs listed Alphabetically by divisions of mining royalties paid (Tiers 1, 2 & 3) and by position within Greater Sydney or otherwise.

TIER 1 Singleton & Muswellbrook (Mining Royalties > \$10,000 per capita)	TIER 2 Mining Affected LGAs (\$500 per capita < Royalties < \$10,000 per capita)	TIER 3 LGAs With Some Mining (\$10 per capita < Royalties < \$500 per capita)	TIER 4 Non Mining LGAs (Mining Royalties < \$10 per capita)		
SINGLETON	WOLLONDILLY	CAMPBELLTOWN	ASHFIELD	BELLINGEN	LOCKHART
MUSWELLBROOK	BLAND	SUTHERLAND	AUBURN	BERRIGAN	MAITLAND
	BLAYNEY	WYONG	BANKSTOWN	BOMBALA	MOREE PLAINS
	BOGAN	BROKEN HILL	BAULKHAM HILLS	BOOROWA	MURRAY
	CABONNE	GOULBURN MULWAREE	BLACKTOWN	BOURKE	MURRUMBIDGEE
	CESSNOCK	GREAT LAKES	BLUE MOUNTAINS	BREWARRINA	NAMBUCCA
	COBAR	GUNNDAH	BOTANY BAY	BYRON	NARRANDERA
	GLOUCESTER	HARDEN	BURWOOD	CARRATHOOL	NARROMINE
	LITHGOW	LAKE MACQUARIE	CAMDEN	CENTRAL DARLING	NEWCASTLE
	LIVERPOOL PLAINS	UNINCORPORATED	CANADA BAY	CLARENCE VALLEY	NORFOLK ISLAND
	MID-WESTERN	WENTWORTH	CANTERBURY	COFFS HARBOUR	OBERON
	NARRABRI	WINGECARRIBEE	FAIRFIELD	CONARGO	ORANGE
	PARKES	WOLLONGONG	GOSFORD	COOLAMON	PAERANG
			HAWKESBURY	COOMA-MONARO	PITTSWATER
			HOLROYD	COONAMBLE	PORT MACQUARIE- HASTINGS
			HORNSBY	COOTAMUNDRA	PORT STEPHENS
			HUNTERS HILL	COROWA	QUEANBEYAN
			HURSTVILLE	COWRA	RICHMOND VALLEY
			KOGARAH	DENILQUIN	SHELLHARBOUR
			KU-RING-GAI	DUBBO	SHOALHAVEN
			LANE COVE	DUNGOG	SNOWY RIVER
			LEICHHARDT	EUROBODALLA	TAMWORTH REGIONAL
			LIVERPOOL	FORBES	TEMORA
			MANLY	GILGANDRA	TENTERFIELD
			MARRICKVILLE	GLEN INNES SEVERN	TUMBARUMBA
			MOSMAN	GREATER HUME	TUMUT
			NORTH SYDNEY	GREATER TAREE	TWEED
			PARRAMATTA	GRIFFITH	UPPER HUNTER
			PENRITH	GUNDAGAI	UPPER LACHLAN
			RANDWICK	GUYRA	URALLA
			ROCKDALE	GWYDIR	URANA
			RYDE	HASTINGS	WAGGA WAGGA
			STRATHFIELD	HAY	WAKOOL
			SYDNEY	HILLS	WALCHA
			WARRINGAH	INVERELL	WALGETT
			WILLOUGHBY	JERILDERIE	WARREN
			WOOLLAHRA	JUNEE	WARRUMBUNGLE
			ALBURY	KEMPSEY	WAVERLEY
			ARMIDALE DUMARESQ	KJAMA	WEDDIN
			BALLINA	KYOGLE	WELLINGTON
			BALRANALD	LACHLAN	YASS VALLEY
LGAs Within Greater Sydney			BATHURST REGIONAL	LEETON	YOUNG
LGAs Outside Greater Sydney			BEGA VALLEY	LISMORE	

Table 2: Tier 1, 2 and 3 Mining-Affected Communities in NSW 2012-13

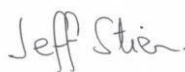
Tier 1 (mining royalties >\$10,000 per capita)	Tier 2 (\$2,500 > mining royalties > \$10,000 per capita)	Tier 3 (\$500 > mining royalties > \$2,500 per capita)	Tier 4 (\$10 > mining royalties > \$500 per capita)
Muswellbrook	Cobar	Bland	Broken Hill
Singleton	Lithgow	Blayney	Goulburn Mulwaree
	Mid-Western Regional	Bogan	Great Lakes
	Narrabri	Cabonne	Lachlan
		Cessnock	Lake Macquarie
		Gloucester	Urana
		Gunnedah	Wingecarribee
		Liverpool Plains	Wollongong
		Parkes	Wyang
		Wentworth	
		Wollondilly	

Once again Bland Shire Council thanks you for the opportunity to provide comments on the IMP and should you require additional information then please do not hesitate to contact either Ray Smith on (02) 6972 2266 or rsmith@blandshire.nsw.gov.au or Jeff Stien on (02) 6979 0244 or jstien@blandshire.nsw.gov.au.

Yours sincerely



Ray Smith
General Manager



Jeff Stien
Senior Economic Development & Tourism Advisor